

Clinton Kitchens

SEMI-CUSTOM CABINETRY

Product Catalog 2026/2027



574-370-3441

About CK

Clinton Kitchens LLC is a semi-custom cabinet manufacturer in Goshen, IN. Clinton Kitchens was established in 2023.

What is “semi-custom”?

Semi-custom is that large gap between cabinets that you would find at a large department store and the very high-end fully-custom cabinetry that lots of woodworking shops offer. Focused on providing basic cabinetry with simple pricing systems and solid components, our cabinets are comparable in build to those of high-end shops, but the customization we offer is significantly less, due to our focus on streamlining the process and keeping prices as low as possible.



Feel free to stop in or give us a call if you have any questions or want to place an order.

Showroom address

14175 CR 36
Goshen IN 46528

Phone: 574-370-3441

Fax: 574-399-5085

Mailing Address

64425 CR 35
Goshen IN 46528

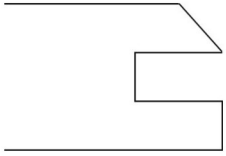
Email: office@clintonkitchens.com



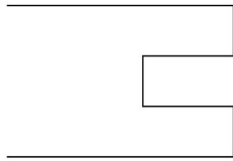
Standard Door Styles

Door Style Options

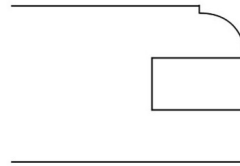
Beveled



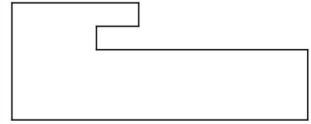
Shaker



Beaded



Skinny Shaker



We also offer solid slab doors. This is $\frac{3}{4}$ " HDF on painted cabinets and $\frac{3}{4}$ " edge-banded plywood on stained cabinets.

Standard doors have a $\frac{1}{4}$ " center panel. This is $\frac{1}{4}$ " plywood on stained doors and $\frac{1}{4}$ " HDF on painted doors.

Standard doors have a $\frac{1}{16}$ " RO on the front side and an eased edge on the back side.

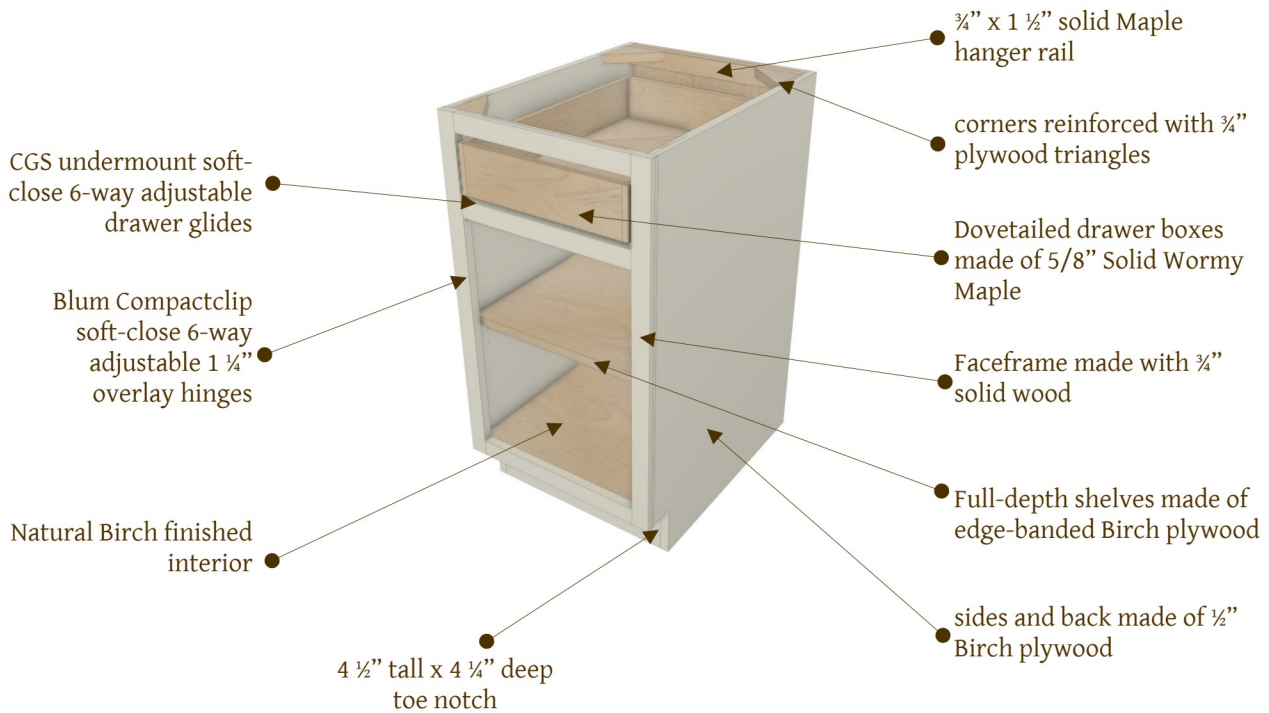
Solid wood panels (reverse-raised) are available as an upgrade option. This will be $\frac{1}{2}$ " HDF for painted cabinets. See pricing by upgrade options.

Please contact us for more information on custom doors. We have a wide variety of doors available on special order.

Drawer Fronts:

Standard drawer fronts are solid slab. 5-Piece fronts are an upcharge, listed in the options. Stained 5-Piece fronts and slab fronts will have horizontal grain unless specified otherwise.

Cabinet Construction Specs



Color Options

Stain Colors

Contact us or your local dealer to see real-wood samples of stains that we offer. We have about a dozen of our own colors on samples, however we also use OCS and FinishWorks colors, but we do not supply sample pieces for those colors except on special order. We do custom stain matches upon request. This charge is \$250 (list price).

Paint Colors

We use Sherwin-Williams Paint colors. These samples can be picked up at many locations across the US. We need the SW code of the color you choose. We can also use Benjamin Moore colors at no upcharge. Contact us if you need to see real painted samples. We also offer custom paint matches upon request. This charge is \$250 (list price).

Pricing

We use list pricing, to enable us to adjust our prices without printing brand new catalogs. You will use a multiplier to get your exact pricing. Your multiplier amount will depend on whether you are a wholesale or retail customer, etc.. 2026 retail multipliers are approximately 55%.

Please contact us for your multiplier to use.

Island Back and Ends

Island Panel

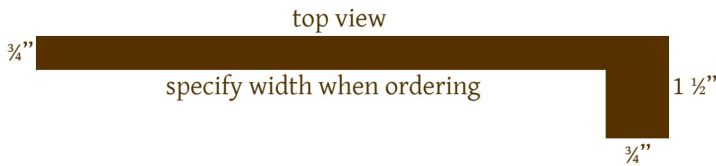
for back or end

bottom rail: 6"
all other stiles and rails: 3"
height: 34 1/2"
width: specify when ordering
List Price: \$200/ft.



**When ordering, please specify how many panels you would like it to have,
Also specify if any ends need to be finished.**

Reefer panel



List Price: \$725.00

Max height: 96"
(Larger sizes available special order)

**Please specify width and height
Of panel when ordering.**

Island End with Wrap

This is an island end panel that extends out behind the cabinets to create a support for the island top. The corners are mitered. See illustrations below.

List Price: \$1700/pair

Sold in pairs of 2.

specify length of return when ordering

Top view



Specify width of island end when ordering



Pantry Cabinets

Cab Code _____

2-Door Pantry

Height:	available in 3" increments from 60" – 96"
Depth:	24"= standard (21", 18", 15", 12" or 9" also avail.)
Width:	available in ¼" increments from 9"-24"

Pricing	
Width	List Price
9" – 12"	\$1,154.00
12 ¼" – 15"	\$1,241.00
15 ¼" – 18"	\$1,330.00
18 ¼" – 21"	\$1,449.00
21 ¼" – 24"	\$1,535.00

Specifications
¼" reveal on 4 edges
½" reveal between doors
Bottom door opening 58" (unless specified)
Includes 4 adj. Shelves
Specify Left or Right Hinge when ordering



Doors larger than 48" will have a center rail, unless specified otherwise.

Pantry Cabinets

Cab Code _____

4-Door Pantry

Height:	available in 3" increments from 60" – 96"
Depth:	24"= standard (21", 18", 15", 12" or 9" also avail.)
Width:	available in ¼" increments from 21"-36"



Pricing

Width	List Price
21" – 24"	\$1,699.00
24 ¼" – 27"	\$1,858.00
27 ¼" – 30"	\$1,945.00
30 ¼" – 33"	\$2,034.00
33 ¼" – 36"	\$2,124.00

Specifications

¼" reveal on 4 edges
½" reveal between doors
Bottom door opening 58" (unless specified)
Includes 4 adj. Shelves

Doors larger than 48" will have a center rail, unless specified otherwise.

Pantry Cabinets

Cab Code _____

1:3 Pantry

Height:	available in 3" increments from 60" – 96"
Depth:	24"= standard (21", 18", 15", 12" also avail.)
Width:	available in ¼" increments from 9"-24"



Pricing	
Width	List Price
9" – 12"	\$1,769.00
12 ¼" – 15"	\$1,864.00
15 ½" – 18"	\$1,968.00
18 ¾" – 21"	\$2,091.00
21 ¼" – 24"	\$2,188.00

Specifications
¼" reveal on 4 edges
½" reveal between doors, drawers
Includes 3 adj. Shelves
drawer openings are 8" high (unless specified)
Specify Left or Right Hinge when ordering

Doors larger than 48" will have a center rail, unless specified otherwise.

Pantry Cabinets

Cab Code _____

2:3 Pantry

Height:	available in 3" increments from 60" - 96"
Depth:	24"= standard (21", 18", 15", 12" also avail.)
Width:	available in ¼" increments from 21"-36"

Pricing	
Width	List Price
21" - 24"	\$2,273.00
24 ¼" - 27"	\$2,447.00
27 ¼" - 30"	\$2,555.00
30 ¼" - 33"	\$2,656.00
33 ¼" - 36"	\$2,756.00

Specifications
¼" reveal on 4 edges
½" reveal between doors, drawers
Includes 3 adj. Shelves
drawer openings are 8" high (unless specified)



Doors larger than 48" will have a center rail, unless specified otherwise.

Wall Oven Cabinet

Cab Code

WOC

Height:	available in 3" increments from 60" - 96"
Depth:	24"
Width:	available in 1/4" increments from 30"-36"

List Price | \$2,850.00

Specifications

suggested bottom drawer opening is 11"



**When ordering a wall oven cabinet, please include a detailed faceframe print.
We can customize size of openings, rails, drawers, etc.
We can also make 2 openings, for an oven and a microwave.**

Base Cabinets

Cab Code _____

1:1 Base

Height:	34 ½"
Depth:	24"= standard (21", 18", 15", 12" also avail.)
Width:	available in ¼" increments from 9"-24"



Pricing	
Width	List Price
9" - 12"	\$678.00
12 ¼" - 15"	\$707.00
15 ½" - 18"	\$739.00
18 ¾" - 21"	\$769.00
21 ¼" - 24"	\$798.00

Specifications
¼" reveal on 2 sides and bottom
½" reveal at top of cabinet
½" reveal between door & drawer
Includes 1 adj. shelf
Top drawer opening is 5"
Specify Left or Right Hinge when ordering

Sink Base Option Available
 Mod Code = SBO
 List Price = -\$80

Pull-Out Wastebaskets Inserts Available
 See Modification pages for options and pricing

Base Cabinets

Cab Code _____

2:1 Base

Height:	34 ½"
Depth:	24"= standard (21", 18", 15", 12" also avail.)
Width:	available in ¼" increments from 21"-36"

Pricing	
Width	List Price
21" - 24"	\$851.00
24 ¼" - 27"	\$924.00
27 ¼" - 30"	\$958.00
30 ¼" - 33"	\$990.00
33 ¼" - 36"	\$1,022.00



Specifications
¼" reveal on 2 sides and bottom
½" reveal at top of cabinet
½" reveal between doors & drawer
Includes 1 adj. shelf
Top drawer opening is 5"

Sink Base Option Available
 Mod Code = SBO
 List Price = -\$80

Pull-Out Wastebaskets Inserts Available
 See Modification pages for options and pricing

Base Cabinets

Cab Code _____

2:2 Base

Height:	34 ½"
Depth:	24"= standard (21", 18", 15", 12" also avail.)
Width:	available in ¼" increments from 33"-42"



Pricing	
Width	List Price
33" - 36"	\$1,166.00
36 ¼" - 39"	\$1,204.00
39 ¼" - 42"	\$1,239.00

Sink Base Option Available
 Mod Code = SBO
 List Price = -\$80

Specifications
¼" reveal on 2 sides and bottom
½" reveal at top of cabinet
½" reveal between doors, drawers
Includes 1 adj. shelf
Top drawer opening is 5"

Base Cabinets

Cab Code _____

FHD Base

Height:	34 ½"
Depth:	24"= standard (21", 18", 15", 12" or 9" also avail.)
Width:	available in ¼" increments from 9"-24"



Pricing	
Width	List Price
9" – 12"	\$527.00
12 ¼" – 15"	\$558.00
15 ¼" – 18"	\$587.00
18 ¼" – 21"	\$616.00
21 ¼" – 24"	\$645.00

Specifications
¼" reveal on 2 sides and bottom
½" reveal at top of cabinet
Includes 1 adj. shelf
Specify Left or Right Hinge when ordering

Pull-Out Wastebaskets Inserts Available
See Modification pages for options and pricing

Base Cabinets

Cab Code _____

FHDD Base

Height:	34 ½"
Depth:	24"= standard (21", 18", 15", 12" or 9" also avail.)
Width:	available in ¼" increments from 21"-42"

Pricing	
Width	List Price
21" - 24"	\$695.00
24 ¼" - 27"	\$770.00
27 ½" - 30"	\$799.00
30 ¾" - 33"	\$828.00
33 ¼" - 36"	\$860.00
36 ¾" - 39"	\$889.00
39 ¼" - 42"	\$918.00



Specifications
¼" reveal on 2 sides and bottom
½" reveal at top of cabinet
Includes 1 adj. shelf



Base Cabinets

Cab Code _____

2DRWR Base

Height:	34 ½"
Depth:	24"= standard (21", 18", 15", or 12" also avail.)
Width:	available in ¼" increments from 9"-36"

Pricing	
Width	List Price
9" - 12"	\$870.00
12 ¼" - 15"	\$910.00
15 ¼" - 18"	\$951.00
18 ¼" - 21"	\$991.00
21 ¼" - 24"	\$1,027.00
24 ¼" - 27"	\$1,111.00
27 ¼" - 30"	\$1,149.00
30 ¼" - 33"	\$1,188.00
33 ¼" - 36"	\$1,227.00



Specifications
¼" reveal on 2 sides and bottom
½" reveal at top of cabinet
½" reveal between drawers
both drawer openings are 12 ¾" high

Base Cabinets

Cab Code _____

3DRWR Base

Height:	34 ½"
Depth:	24"= standard (21", 18", 15", or 12" also avail.)
Width:	available in ¼" increments from 9"-36"

Pricing	
Width	List Price
9" - 12"	\$941.00
12 ¼" - 15"	\$977.00
15 ½" - 18"	\$1,021.00
18 ¾" - 21"	\$1,057.00
21 ¼" - 24"	\$1,093.00
24 ½" - 27"	\$1,175.00
27 ¾" - 30"	\$1,221.00
30 ¼" - 33"	\$1,260.00
33 ½" - 36"	\$1,299.00



Specifications
¼" reveal on 2 sides and bottom
½" reveal at top of cabinet
½" reveal between drawers
Top drawer opening is 5"
Bottom 2 drawer openings are 9 1/2"

Base Cabinets

Cab Code _____

4DRWR Base

Height:	34 ½"
Depth:	24"= standard (21", 18", 15", or 12" also avail.)
Width:	available in ¼" increments from 9"-36"

Pricing	
Width	List Price
9" - 12"	\$1,078.00
12 ¼" - 15"	\$1,106.00
15 ¼" - 18"	\$1,143.00
18 ¼" - 21"	\$1,175.00
21 ¼" - 24"	\$1,207.00
24 ¼" - 27"	\$1,292.00
27 ¼" - 30"	\$1,339.00
30 ¼" - 33"	\$1,376.00
33 ¼" - 36"	\$1,418.00



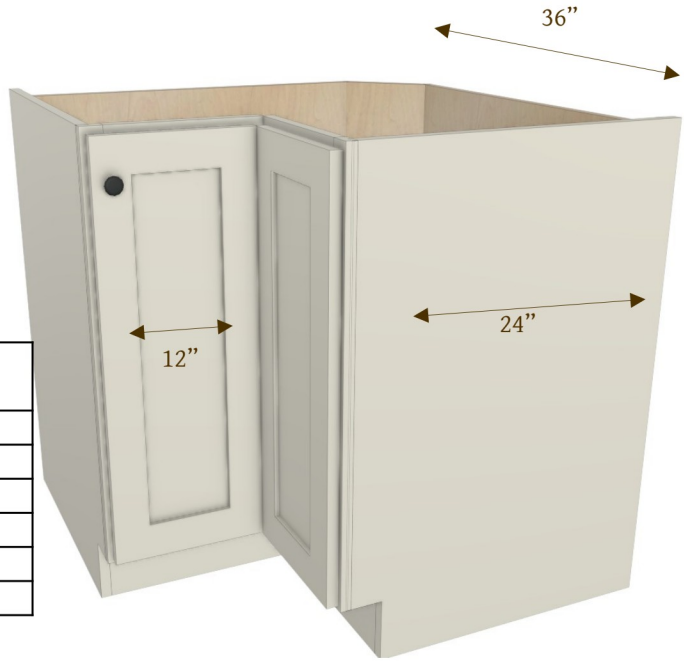
Specifications
¼" reveal on 2 sides and bottom
½" reveal at top of cabinet
½" reveal between drawers
Top drawer opening is 5"
Top 2 drawer fronts are same size
Bottom 2 drawer fronts are same size

Lazy Susan Base Corner Cabinets

Cab Code _____

REG LSB

List Price | \$1,650.00



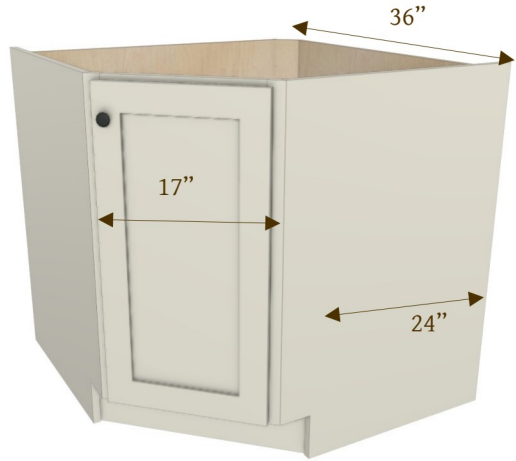
Specifications

34 ½" tall
36" x 36" wide
Specify Left or Right Hinge when ordering
½" reveal above door
¼" reveal on sides of doors
¼" reveal beneath door

Cab Code _____

Diag. LSB

List Price | \$1,600.00



Specifications

34 ½" tall
36" x 36" wide
Specify Left or Right Hinge when ordering
17" face
½" reveal above door
1" reveal on sides of doors
¼" reveal beneath door

Both options of Lazy Susan Base Corner Cabinets Include Century Signature Series Lazy Susan with hardware. To order without Lazy Susan use code **NOLSI** (list Price:-\$700)



574-370-3441

Blind Corner Base Cabinets

Cab Code _____

BC Base

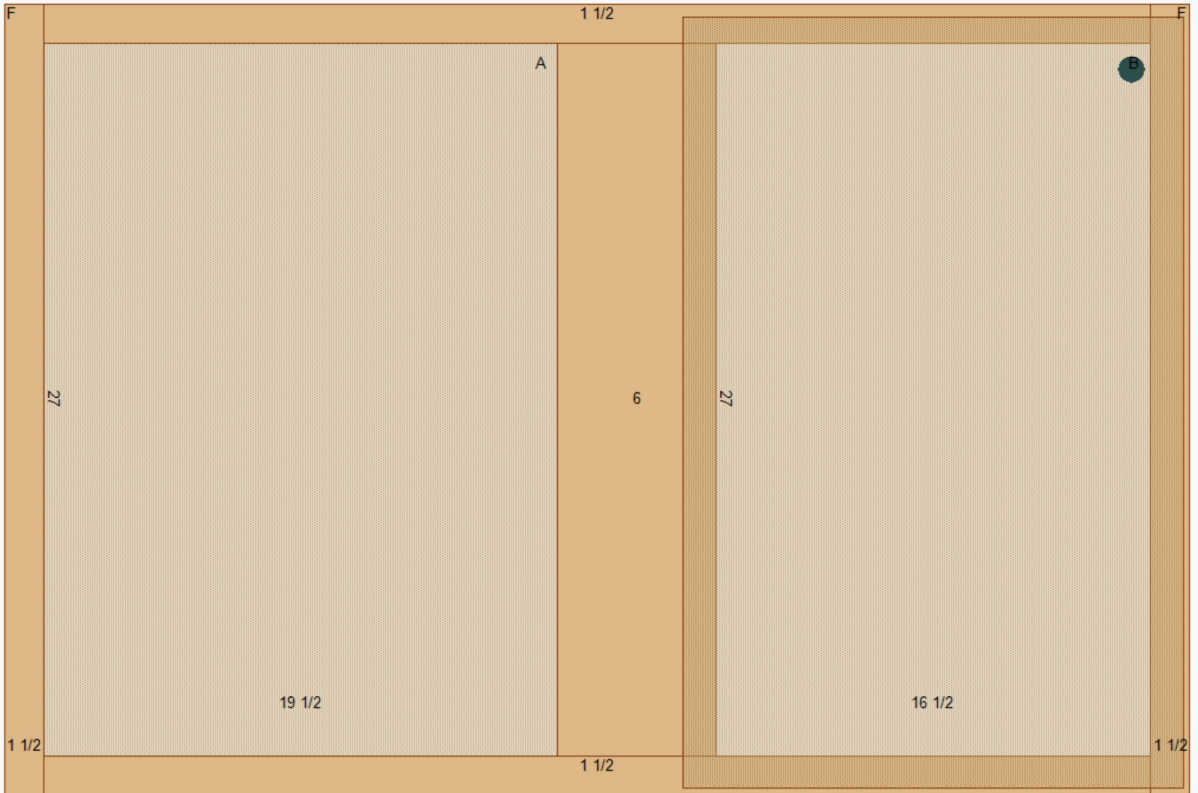
Price	\$965.00
Width	45"
Height	34 ½"
Depth	24", 21", 18", 15", or 12"

Specifications	
16 ½" door opening width	
Includes 1 full length shelf	
Special order sizes available	
Pullout shelf system available (see inserts)	
Specify Left or Right when ordering	



These can be put all the way into the corner or can be gapped up to 3".

BC Base-Left pictured



Diagonal Corner Overhead Cabinets

Cab Code _____

DCOH

Pricing	
Height (3" increments)	List Price
up to 24"	\$580.00
27" or 30"	\$638.00
33" or 36"	\$682.00
39" or 42"	\$752.00
45" or 48"	\$824.00

Specifications
24" x 24" wide
Specify Left or Right Hinge when ordering
17" face
1 ¼" overlay at top and bottom
1" reveal on sides of doors
Includes 2 adj. Shelves



Cabinets on either side of diagonal corner cabinets should have XSI-3/4" on side adjoining corner cabinets!!

Cab Code _____

DCOH2D

Pricing	
Height (3" increments)	List Price
42" - 48"	\$884.00
51" or 54"	\$928.00

Specifications
top door opening is 12" tall unless specified
Specify Left or Right Hinge when ordering
1 ¼" overlay at top and bottom
1" reveal on sides of doors
½" reveal between doors
Includes 2 adj. Shelves

Measurements same as above



Blind Corner Overhead Cabinets

Cab Code _____

BCOH

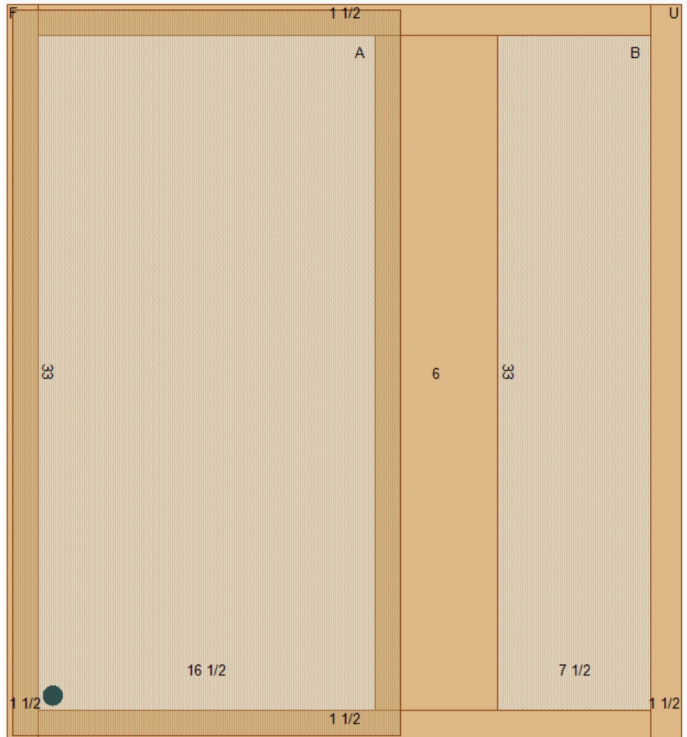
Pricing	
Height (3" increments)	List Price
24" - 36"	\$902.00
39" - 48"	\$1,116.00

Width	33"
Height	24" - 48"
Depth	12"



BCOH- Right pictured

Specifications
16 1/2" door opening width
Includes 2 adj. Shelves
Special order sizes available
Specify Left or Right when ordering
1 1/4" overlay all 4 sides
Can be put against the wall or gapped up to 3"



Overhead Cabinets

Cab Code _____

1DOH

Height:	available in 9", 12", 15", 18" tall
Depth:	12"
Width:	available in ¼" increments from 9"-24"



Pricing	
Width	List Price
9" - 12"	\$428.00
12 ¼" - 15"	\$446.00
15 ½" - 18"	\$467.00
18 ¾" - 21"	\$486.00
21 ¼" - 24"	\$503.00

Specifications	
¼" reveal on all 4 sides of door	
Includes no shelves	

Cab Code _____

1DOH

Height:	available in 21" or 24" tall
Depth:	12"
Width:	available in ¼" increments from 9"-24"



Pricing	
Width	List Price
9" - 12"	\$455.00
12 ¼" - 15"	\$480.00
15 ½" - 18"	\$503.00
18 ¾" - 21"	\$527.00
21 ¼" - 24"	\$549.00

Specifications	
¼" reveal on all 4 sides of door	
Includes 1 adj. Shelf	

Overhead Cabinets

Cab Code _____

1DOH

Height:	available in 27" or 30" tall
Depth:	12"
Width:	available in ¼" increments from 9"-24"

Pricing	
Width	List Price
9" - 12"	\$510.00
12 ¼" - 15"	\$542.00
15 ½" - 18"	\$573.00
18 ¾" - 21"	\$607.00
21 ¼" - 24"	\$638.00

Specifications
¼" reveal on all 4 sides of door
Includes 2 adj. shelves



Cab Code _____

1DOH

Height:	available in 33" or 36" tall
Depth:	12"
Width:	available in ¼" increments from 9"-24"

Pricing	
Width	List Price
9" - 12"	\$539.00
12 ¼" - 15"	\$578.00
15 ½" - 18"	\$616.00
18 ¾" - 21"	\$655.00
21 ¼" - 24"	\$691.00

Specifications
¼" reveal on all 4 sides of door
Includes 2 adj. shelves



Overhead Cabinets

Cab Code _____

1DOH

Height:	available in 39" or 42" tall
Depth:	12"
Width:	available in ¼" increments from 9"-24"

Pricing	
Width	List Price
9" - 12"	\$585.00
12 ¼" - 15"	\$630.00
15 ¼" - 18"	\$677.00
18 ¼" - 21"	\$721.00
21 ¼" - 24"	\$768.00

Specifications
¼" reveal on all 4 sides of door
Includes 3 adj. Shelves



Cab Code _____

1DOH

Height:	available in 45" or 48" tall
Depth:	12"
Width:	available in ¼" increments from 9"-24"

Pricing	
Width	List Price
9" - 12"	\$631.00
12 ¼" - 15"	\$682.00
15 ¼" - 18"	\$738.00
18 ¼" - 21"	\$787.00
21 ¼" - 24"	\$845.00

Specifications
¼" reveal on all 4 sides of door
Includes 3 adj. Shelves



Overhead Cabinets

Cab Code _____

2STDROH

Height:	available in 42", 45", 48", 51" or 54" tall
Depth:	12"
Width:	available in ¼" increments from 9"-24"

Pricing	
Width	List Price
9" - 12"	\$971.00
12 ¼" - 15"	\$1,026.00
15 ½" - 18"	\$1,083.00
18 ¾" - 21"	\$1,136.00
21 ¼" - 24"	\$1,194.00

Specifications
top opening is 12" tall unless specified
Includes 3 adj. Shelves
¼" reveal on 4 sides
½" reveal between top & bottom doors



Overhead Cabinets

Cab Code _____

2DOH

Height:	available in 9", 12", 15", or 18" tall
Depth:	12"
Width:	available in ¼" increments from 21"-48"

Pricing	
Width	List Price
21" - 24"	\$602.00
24 ¼" - 27"	\$621.00
27 ½" - 30"	\$639.00
30 ¾" - 33"	\$664.00
33 ¼" - 36"	\$682.00
36 ¾" - 39"	\$700.00
39 ½" - 42"	\$723.00
42 ¼" - 45"	\$741.00
45 ¼" - 48"	\$759.00



Specifications
¼" reveal on all 4 sides
Includes no shelves
39" and wider have 3" center stile with ½" reveal between doors



Overhead Cabinets

Cab Code _____

2DOH

Height:	available in 21" or 24" tall
Depth:	12"
Width:	available in ¼" increments from 21"-48"



Pricing	
Width	List Price
21" - 24"	\$648.00
24 ¼" - 27"	\$674.00
27 ½" - 30"	\$697.00
30 ¾" - 33"	\$724.00
33 ¼" - 36"	\$747.00
36 ½" - 39"	\$773.00
39 ¾" - 42"	\$801.00
42 ¼" - 45"	\$823.00
45 ½" - 48"	\$846.00

Specifications
¼" reveal on all 4 sides
Includes 1 adj. shelf
39" and wider have 3" center stile with ½" reveal between doors

Overhead Cabinets

Cab Code _____

2DOH

Height:	available in 27" or 30" tall
Depth:	12"
Width:	available in ¼" increments from 21"-48"

Pricing	
Width	List Price
21" - 24"	\$730.00
24 ¼" - 27"	\$762.00
27 ¼" - 30"	\$796.00
30 ¼" - 33"	\$832.00
33 ¼" - 36"	\$863.00
36 ¼" - 39"	\$895.00
39 ¼" - 42"	\$933.00
42 ¼" - 45"	\$965.00
45 ¼" - 48"	\$996.00



Specifications
¼" reveal on all 4 sides
Includes 2 adj. shelves
39" and wider have 3" center stile with ½" reveal between doors



Overhead Cabinets

Cab Code _____

2DOH

Height:	available in 33" or 36" tall
Depth:	12"
Width:	available in ¼" increments from 21"-48"

Pricing	
Width	List Price
21" - 24"	\$781.00
24 ¼" - 27"	\$822.00
27 ¼" - 30"	\$858.00
30 ¼" - 33"	\$902.00
33 ¼" - 36"	\$940.00
36 ¼" - 39"	\$979.00
39 ¼" - 42"	\$1,023.00
42 ¼" - 45"	\$1,061.00
45 ¼" - 48"	\$1,098.00



Specifications
¼" reveal on all 4 sides
Includes 2 adj. shelves
39" and wider have 3" center stile with ½" reveal between doors

Overhead Cabinets

Cab Code _____

2DOH

Height:	available in 39" or 42" tall
Depth:	12"
Width:	available in ¼" increments from 21"-48"



Pricing	
Width	List Price
21" - 24"	\$868.00
24 ¼" - 27"	\$913.00
27 ½" - 30"	\$960.00
30 ¾" - 33"	\$1,009.00
33 ¼" - 36"	\$1,057.00
36 ¾" - 39"	\$1,101.00
39 ¼" - 42"	\$1,153.00
42 ¾" - 45"	\$1,198.00
45 ¼" - 48"	\$1,242.00

Specifications
¼" reveal on all 4 sides
Includes 3 adj. shelves
39" and wider have 3" center stile with ½" reveal between doors



Overhead Cabinets

Cab Code _____

2DOH

Height:	available in 45" or 48" tall
Depth:	12"
Width:	available in ¼" increments from 21"-48"

Pricing	
Width	List Price
21" - 24"	\$955.00
24 ¼" - 27"	\$1,004.00
27 ½" - 30"	\$1,062.00
30 ¾" - 33"	\$1,116.00
33 ¼" - 36"	\$1,174.00
36 ½" - 39"	\$1,223.00
39 ¾" - 42"	\$1,283.00
42 ¼" - 45"	\$1,335.00
45 ½" - 48"	\$1,386.00



Specifications
¼" reveal on all 4 sides
Includes 3 adj. shelves
39" and wider have 3" center stile with ½" reveal between doors

Overhead Cabinets

Cab Code _____

4STDROH

Height:	available in 42", 45", 48", 51" or 54" tall
Depth:	12"
Width:	available in ¼" increments from 21"-48"

Pricing	
Width	List Price
21" - 24"	\$1,383.00
24 ¼" - 27"	\$1,442.00
27 ½" - 30"	\$1,500.00
30 ¾" - 33"	\$1,566.00
33 ¼" - 36"	\$1,623.00
36 ½" - 39"	\$1,679.00
39 ¾" - 42"	\$1,746.00
42 ¼" - 45"	\$1,803.00
45 ½" - 48"	\$1,857.00



Specifications
top opening is 12" tall unless specified
Includes 3 adj. Shelves
¼" reveal on 4 sides
½" reveal between top & bottom doors
39" and wider have 3" center stile with ½" reveal between doors



Vanity Sink Base Cabinets

Cab Code _____

112VSB

Height:	34 ½" = standard (32", 30" also available)
Depth:	21" = standard (24", 18", 15" or 12" also avail.)
Width:	available in ¼" increments from 30" - 42"

Pricing	
Width	List Price
30" - 33"	\$1,380.00
33 ¼" - 36"	\$1,414.00
36 ½" - 39"	\$1,452.00
39 ¾" - 42"	\$1,492.00



Door Right shown

Specifications
¼" reveal on 2 sides & bottom
½" reveal between doors/drawers
Specify Door Right or Door Left when ordering

Vanity Sink Base Cabinets

Cab Code _____

214VSB

Height:	34 ½" = standard (32", 30" also available)
Depth:	21" = standard (24", 18", 15" or 12" also avail.)
Width:	available in ¼" increments from 45" - 60"



Pricing

Width	List Price
45-48"	\$2,240.00
48 ¼" - 54"	\$2,368.00
54 ¼" - 60"	\$2,436.00

Specifications

¼" reveal on 2 sides & bottom

½" reveal between doors/drawers

Specify hinge side when ordering



Modifications Available

Mod Code	Description	List Price
RFE	Add finished end to right side of cabinet (¼" applied panel)	OH/ \$80 Base/ \$160
LFE	Add finished end to left side of cabinet (¼" applied panel)	Pantry/\$350
ADDRWR	Add drawer to any cabinet	\$200.00
GPD	Glass Panel Door (not available in Skinny Shaker or Solid Slab)	\$60.00/per door
POT	Pull-out Tray (3" tall, with scooped front)(price per each)	\$170.00
TOT	Tip-Out Tray (soft-close hinges, plastic tray)	\$110.00
5PDF	5-Piece Drawer front (upcharge price per each)	\$30.00
BLUMDG	BLUM Drawer Glide (upcharge price per drawer)	\$25.00
BISWT	Built-in Silverware tray (provide drawing of dividers)	\$200.00
WTR	3" wide top rail on cabinet (not available on base cabinets)(OA size of cabinet doesn't change)	NO UPCHARGE
XSO	Extend Side stile Outward - provide measurement up to 4 ½" (see pic)(specify R or L)	\$20.00
XSI	Extend Side stile Inward - provide measurement up to 4 ½" (see pic)(specify R or L)	\$20.00
XSTF-R	Extend Right Side stile to Floor (see pic A)	\$40.00
XSTF-L	Extend Left Side stile to Floor (see pic A)	\$40.00
FTK	Flush Toe Kick - 6" rail along bottom of cabinet (no notch)	\$40.00
PINT	Matching Painted Interior of cabinet (add to price of cab)	25.00%
STINT	Matching Stained Interior of cabinet (add to price of cab)	50.00%
DOOR	Custom-sized door, for misc. applications. Specify size and style. Priced per square foot (minimum 1 square foot).	\$70.00
PANEL	Custom-sized ¼" panel Priced per square foot (minimum 1 square foot).	\$40.00
SBO	Sink Base Option (this eliminates the top drawer and includes a fixed drawer front)	-\$80.00
DOH	Deep Overhead - Make any overhead cabinet 15", 18", 21" or 24" deep	\$100.00

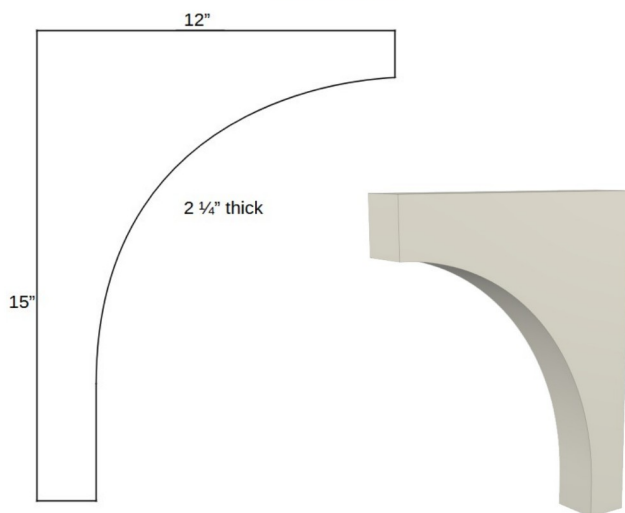
Modifications Available

Mod Code	Description	List Price
POWB1	Century Edge Series Pullout Wastebasket with one 35 qt. Container and a metal canister behind it (12-15" opening width)	\$500.00
POWB2	Century Edge Series Pullout Wastebasket with two 35 qt. Containers (15" -21" opening width)	\$520.00
POWB3	Century Edge Series Pullout Wastebasket with 2- 50 qt. Bins (15" - 21" opening width)	\$530.00
OHLS	Century Signature series lazy susan for overhead corner cabinet with hardware and 3 trays	\$700.00
LMTS	Blind Corner Pull-out shelf system	\$700.00
ADJSHELF	add an adjustable shelf to any cabinet	\$25.00
SPD	Solid Wood panel in the doors (this is 5/8" HDF in painted doors) (see details on p. 3)	Add 2%
GLAZE	Add a Glaze Finish to a painted job	Add 5%
DISTRESS	Distressing of cabinets (worm-holes, dings and dents)	Add 3%
(NONE)	If you want to paint a species besides Maple/MDF.	Add 10%
SAMPLE DOOR	12" x 14" sample door, specify species, door style, and stain color	\$60.00
SAMPLE SET	Set(13) of stain samples (4" x 6"), specify wood species	\$100.00
CUSTSAMPLE	Any 1 paint or stain color sample, 4" x 6"	\$10.00

A



Corbel



Changing Side Stile Sizes

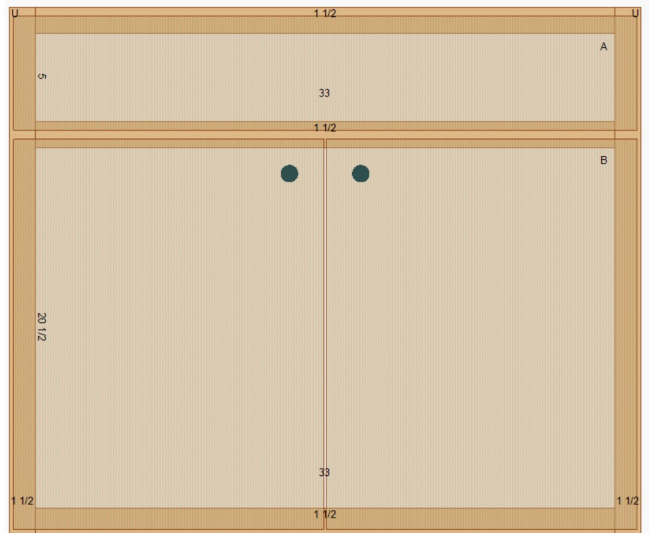
Extending Stile Outward (XSO)

Extending the stile outward means that the outside measurements of the faceframe will change. The faceframe will stick out beyond the edge of the box more than normal. Order the cabinet size you want, then specify the extension with the Mod Code. See the pictures below (and next page) for a 36" sink base cabinet.

Extending Stile Inward (XSI)

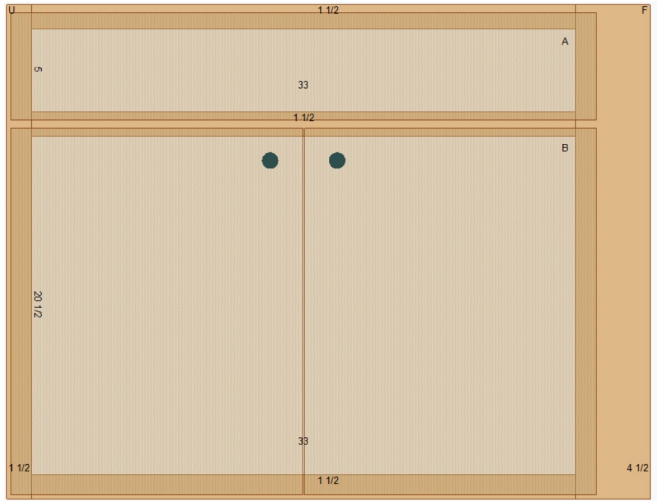
Extending the stile inward means that the outside measurements of the faceframe will not change. Order the cabinet size you want, then give the extension with the mod code. See the pictures below (and next page) for a 36" sink base cabinet.

This is a 36" sink base cabinet before it is modified. FF size 36" wide, box size (36").

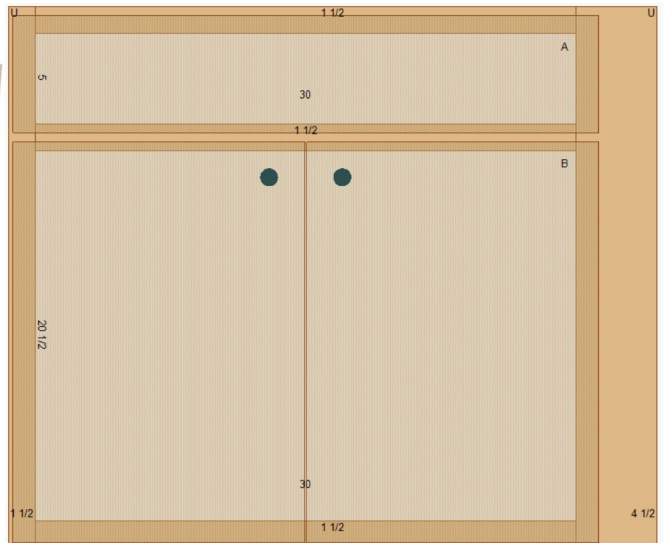


Changing Side Stile Sizes

This is the same cabinet with XSO-R-3" (note that the extension measurement is given, not the overall size of the stile).



This is the same cabinet with XSI-R-3" (note that the extension measurement is given, not the overall size of the stile).



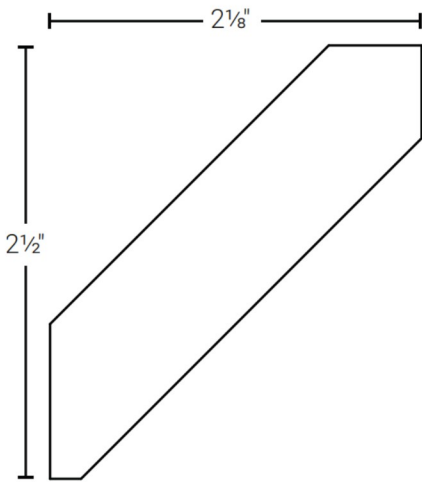
Trim and other misc. items

Product Code	Description (all trim is sold in 8' pieces)	List Price
TKT	¼" x 4 ½" trim for toekick	\$30.00
FLATCRWN	Flat crown molding (see pic)	\$48.00
BDCRWN	Beaded crown molding (see pic)	\$48.00
TRDLCRWN	Traditional crown molding (see pic)	\$48.00
VTCLCRWN	Vertical crown molding (see pic) (specify width)	\$48.00
BASE SHOE	½" x ¾" molding with 3 square corners and 1 large rounded corner (see pic)	\$30.00
SCRIBE MOLD	¼" x ¾" molding with 3 square corners and 1 corner with roundover (see pic)	\$30.00
ISC	Inside corner molding (see pic)	\$30.00
OSC	Outside corner molding (see pic)	\$30.00
BASEBOARD	Molded baseboard (see pic)	\$48.00
SQBB	¾" baseboard with 3 square corners and 1 corner with 1/8" roundover – specify width when ordering (see pic)	\$48.00
SPACER	Available in 1 ½", 3", or 6" wide; 4 square corners, 1 edge and 1 side finished	\$48.00
CORBEL	Corbel to support island top (see pic on page 38)	\$180.00
FLSHLF	Floating shelf. 2 ¼" thick, 12" deep Priced per inch. Add \$20 per finished end	\$8.00
FLSHLFBRKT	InnovaShelf Floating Shelf Bracket, Per set of 2	\$100.00
HOODA	Concave hood (see pic. p. 44) (no blower)	\$2,600.00
HOODB	Angled Hood – Flat (see pic. p. 44) (no blower)	\$2,200.00
HOODC	Angled Hood – with double panel (see pic. p. 44) (no blower)	\$2,400.00
HOODCUST	Customize any measurements of above 3 range hoods	\$300.00
BLOWER	600 CFM Ellica blower with lights	\$1,750.00

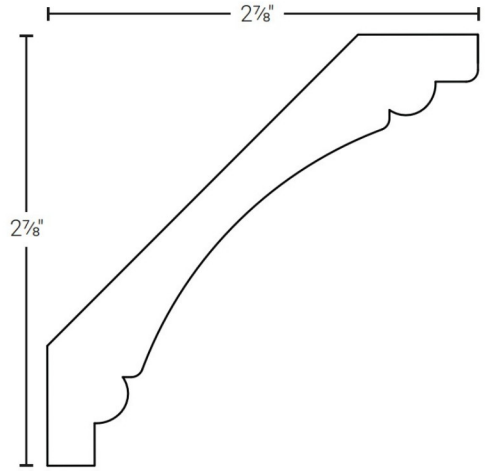
Contact us if you need a style of trim that is not listed. We have a wide range of trim available on special order. We also build custom range hoods.

Crown Molding Illustrations

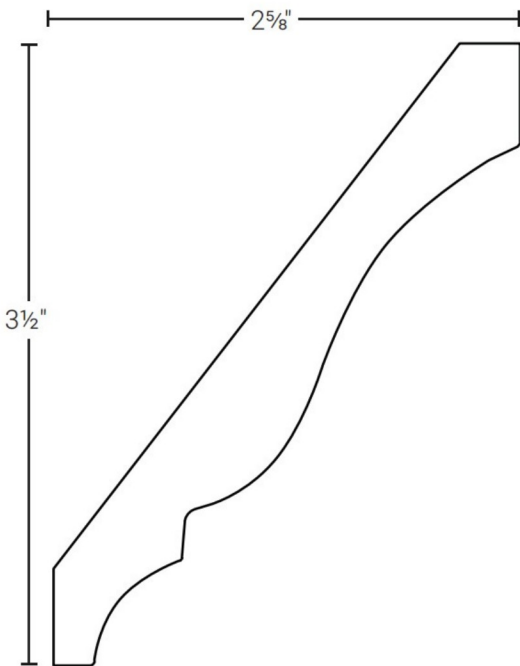
Flat crown



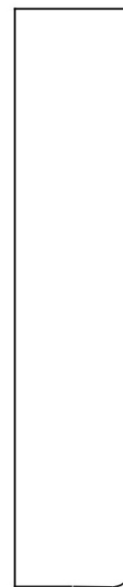
Beaded crown



Traditional crown



Vertical crown



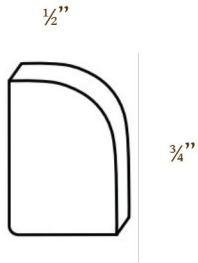
specify width
when ordering
(up to 6")

$\frac{3}{4}$ "

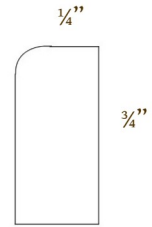


Misc. Illustrations

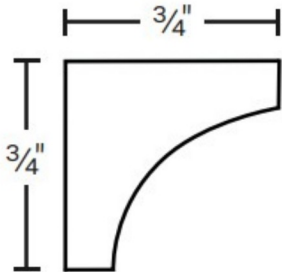
Base Shoe



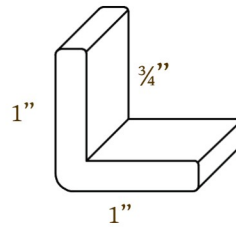
Scribe Molding



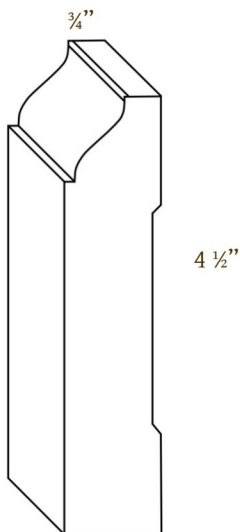
Inside Corner



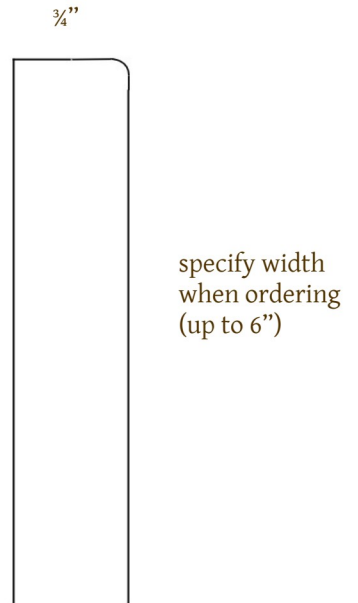
Outside Corner



Molded Baseboard



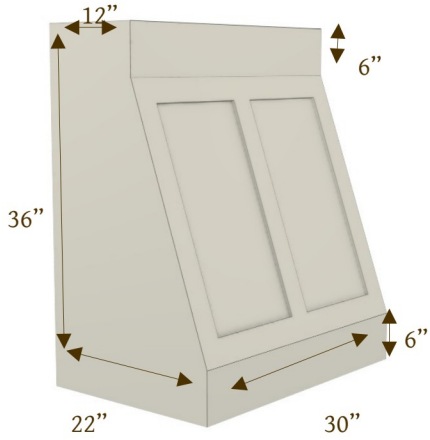
Square Baseboard



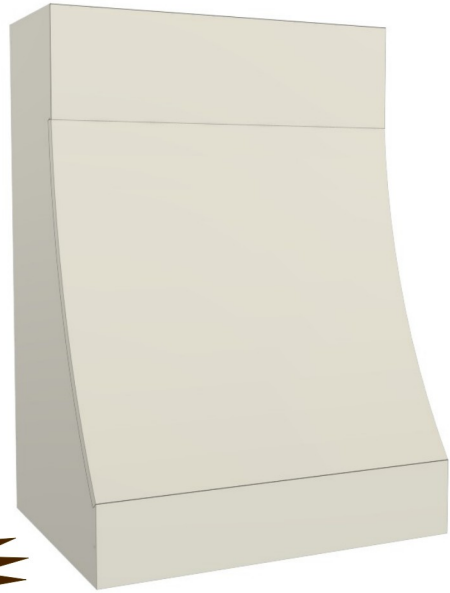
Range Hood Illustrations

Standard Measurements

all hoods are same size

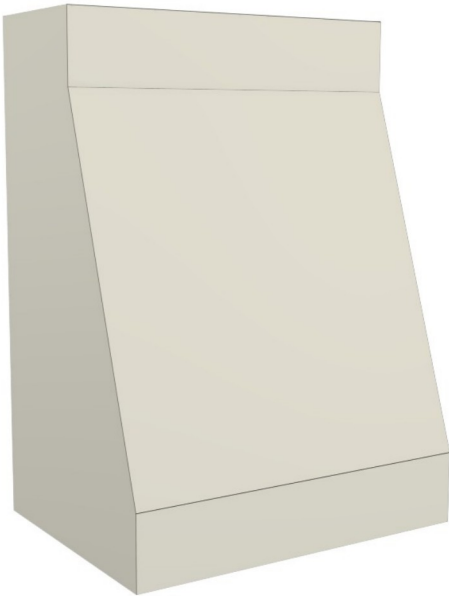


Range Hood A

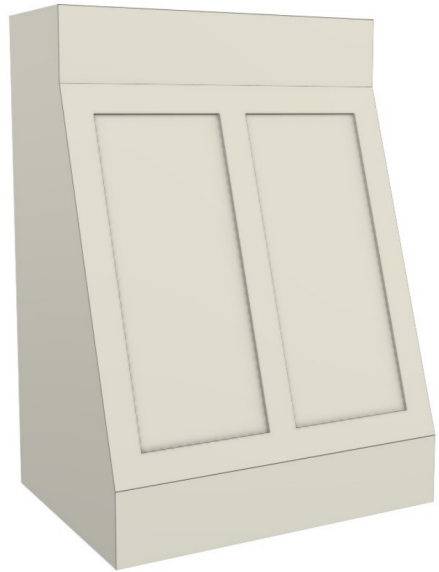


We also offer
fully-custom
range hoods!

Range Hood B

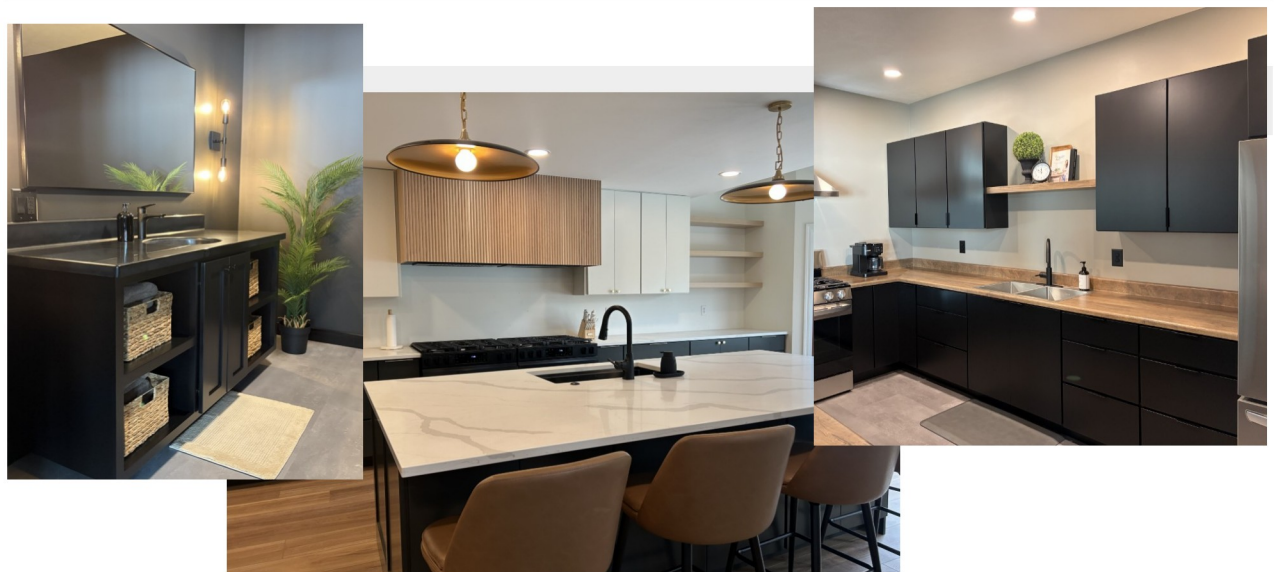


Range Hood C



Wood Species Pricing Chart

Code	Wood Species	Upcharge
PAINTED	Maple frames with HDF panels - Any Sherwin Williams color	0.00%
MAPLE	Brown Soft Maple	0.00%
RED OAK	Red Oak	0.00%
RQSWO	Rustic Quarter-Sawn White Oak	0.00%
KNALDER	Knotty Alder	0.00%
RHICK	Rustic Hickory	3.00%
WSMAPLE	White Soft Maple	3.00%
CALHICK	Calico Hickory	3.00%
CHERRY	Premium Cherry	3.00%
QSWO	Quarter-Sawn White Oak	14.00%
PSWO	Plain Sawn White Oak	16.00%
RIFTWOAK	Rift-Sawn White-Oak	20.00%
WALNUT	Select Walnut	20.00%



Additional Information

Lead Times

Our lead time is typically about 4 weeks after all designing and proofing is done. This can be rushed into 3 weeks on some jobs, but is stretched to 5 weeks on jobs that have lots of custom pieces.

Customization

We do all kinds of customizations, anything from special trim, custom doors, custom range hoods, custom inserts, raw cabinets, book shelves, custom overlay patterns, etc. etc. etc. Please contact us if you need pricing on a custom project.

Shipping

Contact us for a shipping multiplier, or flat rate to use. We do local deliveries with a truck and trailer, and longer deliveries usually with furniture transport companies.

Designing

We offer designing and 3D drawings at no charge for dealers and retail customers. If you wish for us to design and draw other jobs that you do not plan to buy from us we offer that service for \$75 per hour.

Large Orders

If you have large (\$30,000+) or repeat orders please contact us for a special discount.

Inserts

We use Century inserts, as well as some Rev-A-Shelf inserts. If they make it, we can put it in. Contact us for pricing, or take the MSRP from the factory and add approx. 20% (for handling and installation).

Payment

We ask for a 50% payment upon placement of the order. We do not accept credit card. Checks can be mailed to the mailing address listed on the inside of the front cover. Remainder of payment should be made within 30 days of order completion.

**We're always adding new options, and removing out-dated ones,
so please understand if something that is listed is no longer available...**



Clinton Kitchens

Semi-Custom Cabinetry

574-370-3441